



Modular Hi Flow FRLs

P3N 1 Inch Series

Catalogue: PDE2592TCUK-ca
Edition: July 2007



Modular Hi Flow FRLs

Introduction to the Modular Hi-Flow Series	3
Popular combinations	4
Filters	5
Coalescing and Adsorbers	6
Regulators	7
Filter/Regulators	8
Lubricators	9
Modular Hi-Flow FRL materials Mounting Kits and Port Blocks	10
Recommended Lubricants	11



Important !

Before carrying out any service work, ensure that the valve and manifold have been vented. Remove the primary supply air hose to ensure total disconnection of the air supply before dismantling valves or blank connection blocks.



NB !

All technical data in this catalogue is typical only. The air quality is decisive for the valve life: see ISO 8573.



WARNING

FAILURE OR IMPROPER SELECTION OR IMPROPER USE OF THE PRODUCTS AND/OR SYSTEMS DESCRIBED HEREIN OR RELATED ITEMS CAN CAUSE DEATH, PERSONAL INJURY AND PROPERTY DAMAGE.

This document and other information from Parker Hannifin Corporation, its subsidiaries and authorized distributors provide product and/or system options for further investigation by users having technical expertise. It is important that you analyze all aspects of your application and review the information concerning the product or system in the current product catalog. Due to the variety of operating conditions and applications for these products or systems, the user, through its own analysis and testing, is solely responsible for making the final selection of the products and systems and assuring that all performance, safety and warning requirements of the application are met. The products described herein, including without limitation, product features, specifications, designs, availability and pricing, are subject to change by Parker Hannifin Corporation and its subsidiaries at any time without notice.

SALE CONDITIONS

The items described in this document are available for sale by Parker Hannifin Corporation, its subsidiaries or its authorized distributors. Any sale contract entered into by Parker will be governed by the provisions stated in Parker's standard terms and conditions of sale (copy available upon request).

Modular Hi Flow FRLs

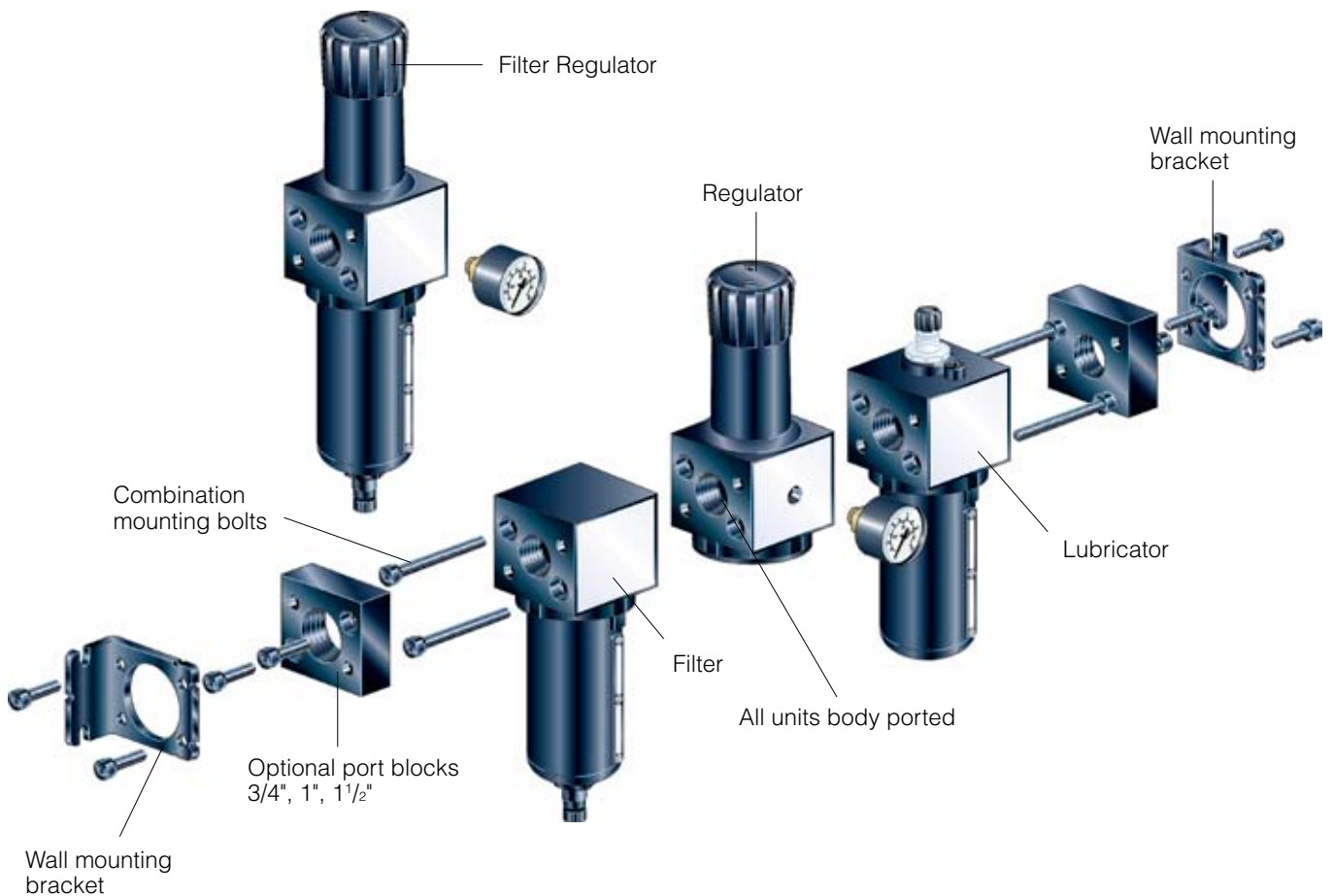
The System

The Modular system allows units to be connected together, without the use of pipe connectors, saving space; providing constant mounting centres; whilst maintaining a modern aesthetically pleasing appearance.

The 1" Series filters are specially designed to efficiently filter out rust, dirt, moisture and other impurities from compressed air lines. Operation is fully automatic with a minimum of pressure drop.

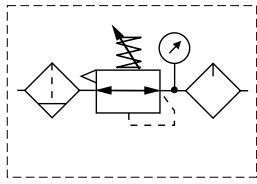
The 1" Series Regulators are designed to provide quick response and accurate pressure regulation for the most demanding Hi-flow industrial applications. The unique solid piston was designed for long trouble-free operation and will not rupture or tear under high cycle or other demanding applications.

The 1" Series mist lubricators are designed to provide lubrication for many general purpose applications in a pneumatic system.

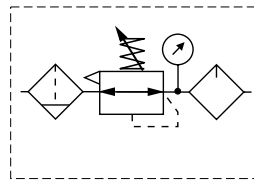
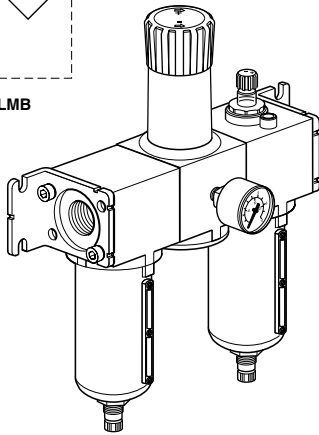


Modular Hi Flow FRLs

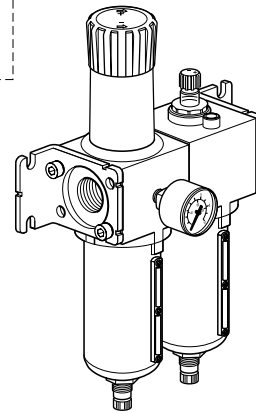
Combinations



P3NCB18SGMNNLMB



P3NCA18SGMNNLMB



Typical Combination 1" FRL

40 micron elements, 8 bar regulator
+ wall mounting brackets

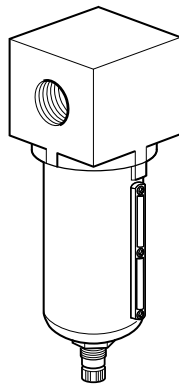
Typical Combination Filter/Regulator - Lubricator

40 micron elements, 8 bar regulator
+ wall mounting brackets

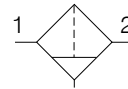
P3N	C		1		S				L		B
Modular Combinations				Metal bowl with sight glass						Wall mounting brackets	
Units		Port type		Port size		Filter elements		Regulator type		Lubricator drain options	
Filter/reg + Lubricator	A	'G' Thread (BSPP)	1	1" ports	8	40 micron element (Standard)	G	Relieving	B	Metal bowl Manual drain	M
Filter+Regulator + Lubricator	B	NPT	9	1.1/2" ports (1" units with 1.1/2" port extensions)	P	5 micron element (Optional)	E	Non-relieving	N	Metal bowl No drain	N
				3/4" ports	6						
						Filter drain options		Reg. Pressure range			
						Manual Drain	M	Without gauge			
						Auto Drain	A	0 - 2 bar Y			
								0 - 4 bar L			
								0 - 8 bar N			
								0 - 16 bar H			
								With gauge			
								0 - 2 bar Z			
								0 - 4 bar M			
								0 - 8 bar G			
								0 - 16 bar J			

Modular Hi Flow FRLs

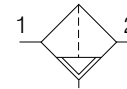
Filters



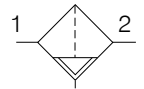
Symbols



Manual drain



Semi auto drain



Auto drain

- Excellent water removal efficiency.
- Metal bowl with sight gauge.
- Larger filter element surface guarantees low pressure drop and increased element life.
- Manual drain or Auto Drain options.

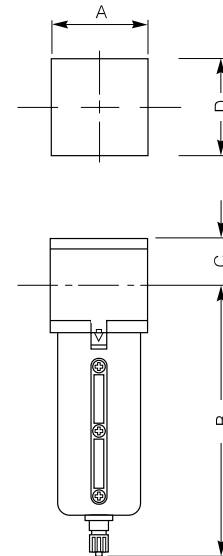
Options:

P3N	F	A					
	Filter						
Port type		Port size		Filter elements		Bowl/drain options	
'G' Thread (BSPP)		1" ports		40 micron element (Standard)		Metal bowl Manual drain	
NPT		3/4" ports		5 micron element (Optional)		Metal bowl Auto drain	
	1		8		G		SM
	9		6		E		SA

Technical information

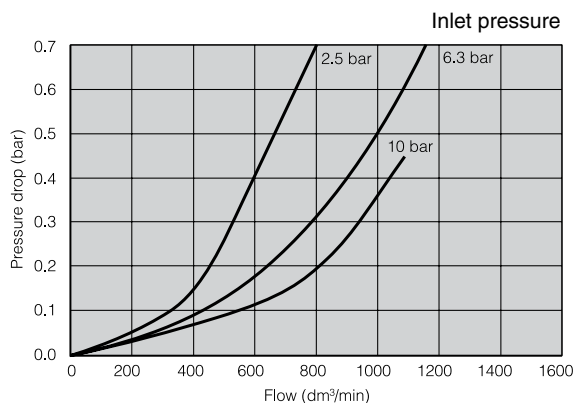
Port sizes	3/4" & 1"
Filter element grade:	Standard 40 micron Option 5 micron
Pressure range:	17 bar max
Temperature range:	-20°C to +80°C
Weight:	1600 g

Dimensions (mm)



Port sizes	A	B	C	D
3/4" & 1"	92	254	35	92

Flow characteristics



Filter Element Kits

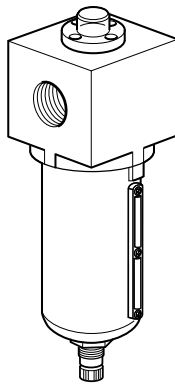
5 Micron element	P3NKA00ESE
40 Micron element	P3NKA00ESE

Filter Spare Kits

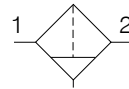
Description	Order code
Manual drain kit	P3E-KA00DBN
Auto drain kit	P3E-KA00DDN

Modular Hi Flow FRLs

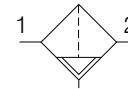
Coalescing filters



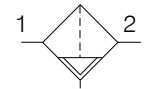
Symbols



Manual drain



Semi auto drain



Auto drain

- DPI indicator as standard
- Excellent water removal efficiency.
- Metal bowl with sight gauge.
- Larger filter element surface guarantees low pressure drop and increased element life.
- Manual drain as standard or optional auto drain available.

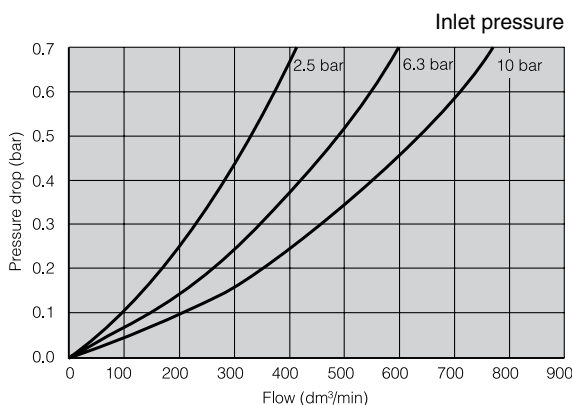
Options:

P3N	F	A							
Coalescing Filter		Port type 'G' Thread (BSPP) 1 NPT 9		Port size 1" ports 8 3/4" ports 6		Filter elements Coalescing Grade 6 with pressure drop indicator (Standard) D Adsorber element with pressure drop indicator B Adsorber element without pressure drop indicator A		Bowl/drain options Metal bowl Manual drain SM Metal bowl Auto drain SA	

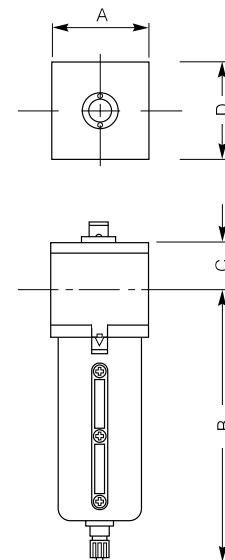
Technical information

Port sizes	3/4" & 1"
Coalescing element grade:	0.3 micron Grade 6
Pressure range:	17 bar max
Temperature range:	-20°C to +80°C
Weight:	1600 g

Flow characteristics



Dimensions (mm)



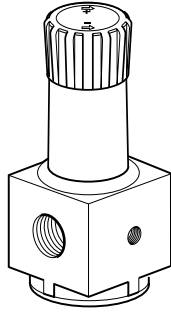
Port sizes	A	B	C	D
3/4" & 1"	92	254	35	92

Filter Element Kits

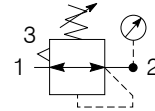
Coalescing element	P3NKA00ESC
Adsorber element	P3NKA00ESA

Modular Hi Flow FRLs

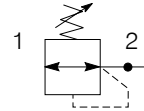
Regulators



Symbols



Self bleed regulator with gauge



Non bleed regulator with gauge

- Self relieving feature plus balanced poppet provides quick response and accurate pressure regulation.
- Solid control piston for extended life.

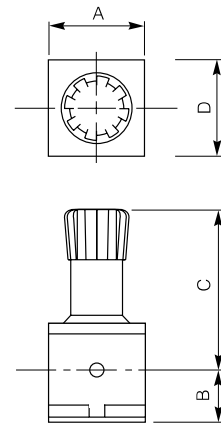
Options:

P3N	R	A	1			N	
Regulator		Port type		Port size		Regulator type	
		'G' Thread (BSPP)	1	1" ports	8	Relieving	B
		NPT	9	3/4" ports	6	Non-relieving	N
				Regulator Pressure range			
				Without gauge		With gauge	
				0 - 2 bar	Y	0 - 2 bar	Z
				0 - 4 bar	L	0 - 4 bar	M
				0 - 8 bar	N	0 - 8 bar	G
				0 - 16 bar	H	0 - 16 bar	J

Technical information

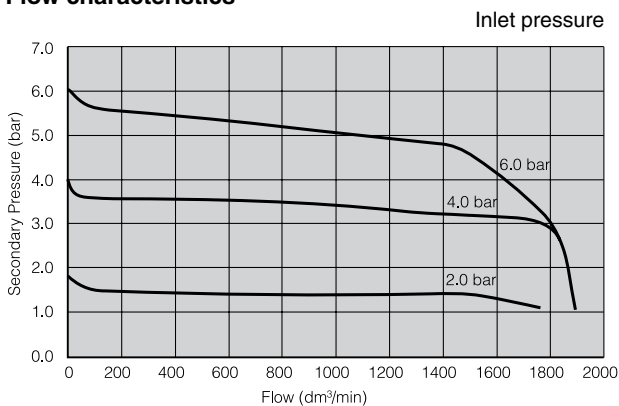
Port sizes	3/4" & 1"
Gauge ports:	1/4"
Max inlet pressure (p1):	17 bar max
Secondary pressure range: (p2)	Standard: 0.1 to 8 bar Option 1: 0.1 to 2 bar Option 2: 0.1 to 4 bar Option 3: 0.3 to 16 bar
Temperature range:	-20°C to +80°C
Weight:	1900 g

Dimensions (mm)



Port sizes	A	B	C	D
3/4" & 1"	92	53	162	92

Flow characteristics



Regulator Spare Kits

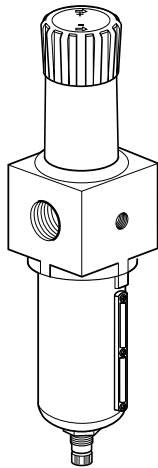
Repair kit (self-relieving)	P3NKA00RR
Repair kit (non-relieving)	P3NKA00RN

Gauges

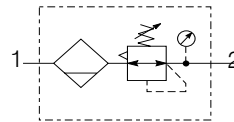
Description	Pressure range (bar)	Port size	Dial mm	Weight g	Order code
Rear entry	0-4	G1/4	50	74	P6G-ERB2040
Rear entry	0-14	G1/4	50	74	P6G-ERB2140
Rear entry	0-20	G1/4	50	74	P6G-ERB2200

Modular Hi Flow FRLs

Filter/Regulators



Symbol



- Self relieving feature plus balanced poppet provides quick response and accurate pressure regulation.
- Solid control piston for extended life.

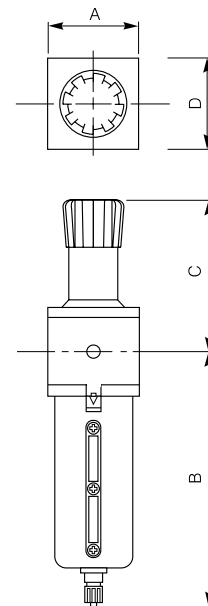
Options:

P3N	E	A	1					B	N	
Filter/Regulator		Port size		Filter elements		Bowl/drain options		Relieving		
Port type		1" ports	8	40 micron element (Standard)	G	Metal bowl	SM	Spring rating		
'G' Thread (BSPP)	1	3/4" ports	6	5 micron element (Optional)	E	Manual drain		Without gauge	With gauge	
NPT	9					Metal bowl	0 - 2 bar	Y	0 - 2 bar	Z
						Auto drain	0 - 4 bar	L	0 - 4 bar	M
							0 - 8 bar	N	0 - 8 bar	G
							0 - 16 bar	H	0 - 16 bar	J

Technical information

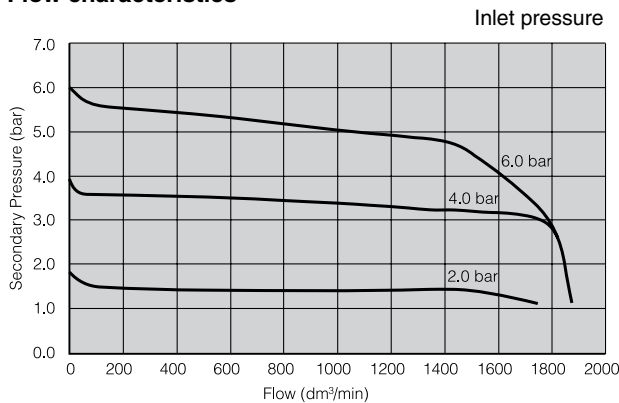
Port sizes	3/4" & 1"
Gauge ports:	1/4"
Max inlet pressure (p1):	17 bar max
Secondary pressure range: (p2)	Standard: 0.1 to 8 bar Option 1: 0.1 to 2 bar Option 2: 0.1 to 4 bar Option 3: 0.3 to 16 bar
Temperature range:	-20°C to +80°C
Weight:	2400 g

Dimensions (mm)



Port sizes	A	B	C	D
3/4" & 1"	92	243	162	92

Flow characteristics

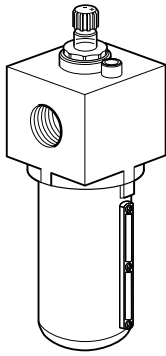


Filter/Regulator Spare Kits

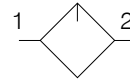
5 Micron element	P3NKA00ESE
40 Micron element	P3NKA00ESG
Repair kit (self-relieving)	P3NKA00RR
Repair kit (non-relieving)	P3NKA00RN

Modular Hi Flow FRLs

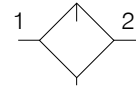
Lubricators



Symbols



Lubricator



Lubricator with drain

- Proportional oil delivery over a wide range of air flows.
- Bowl can be filled while air line is under pressure.
- Transparent sight dome for 360° visibility.

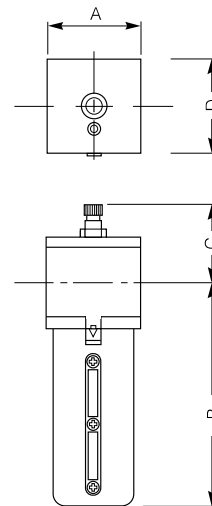
Options:

P3N	L	A			L			
	Lubricator							
			Port type		Port size		Bowl/drain options	
			'G' Thread (BSPP)	1	1" ports	8	Metal bowl Manual drain	SM
			NPT	9	3/4" ports	6	Metal bowl No drain	SN

Technical information

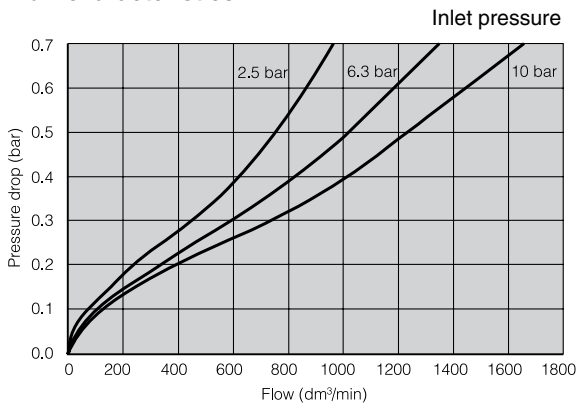
Port sizes	3/4" & 1"
Max inlet pressure (p1):	17 bar max
Min flow oil pickup:	3.7 l/sec
Bowl capacity:	300cc
Recommended lubricant:	See page 11
Temperature range:	-20°C to +80°C
Weight:	1600 g

Dimensions (mm)



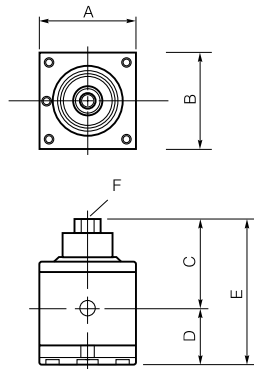
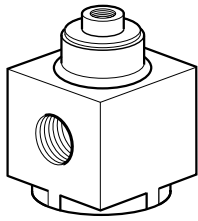
Port sizes	A	B	C	D
3/4" & 1"	92	230	71.3	92

Flow characteristics



Modular Hi Flow FRLs

Air pilot regulators



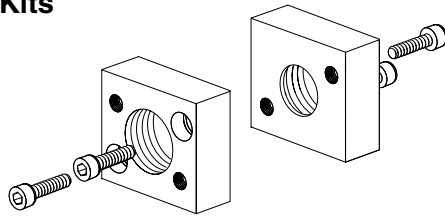
- Self relieving feature plus balanced poppet provides quick response and accurate pressure regulation.
- Solid control piston for extended life.

Order code

P3NRA18BPP

A	A (PB)	B	C	D	E	F
92	142	92	86	53	139	G ¹ / ₄

Port Block Kits



Description	Connection	Weight Kg	Order Code
Kits for single Units or Combinations without Lubricators (2 port blocks + 2 seals)	G ³ / ₄	574	P3NKB16CP
	G1	554	P3NKB18CP
	G ¹ / ₂	534	P3NKB1BCP
Kits for Combinations with Lubricators (2 port blocks + 2 seals)	G ³ / ₄	574	P3NKB16CL
	G1	554	P3NKB18CL
	G ¹ / ₂	534	P3NKB1BCL

For NPT threads change **1** to **9**.

Materials

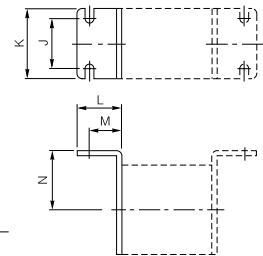
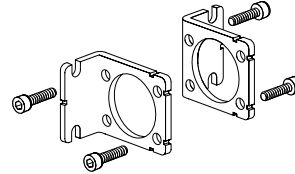
Filter

Body	Aluminium
Bowl	Aluminium
Deflector	Plastic
Drain	Plastic
Seals	Nitril
Element	Plastic
Sight Glass	Polyamide

Lubricator

Body	Aluminium
Bowl (metal)	Aluminium
Drains	Plastic
Injector meter block & brass assembly	Plastic
Seals	Nitrile
Sight glass	Polyamide
Sight dome	Polycarbonate

Mounting brackets



Order code

P3NKA00MW For 3/4 & 1" sizes

P3NKB00MW For 1.1/2" port size

L	M	N	J	K
45	33	60	50	70

Body Covers



Order code

P3NKA00PM

Each kit contains two covers.

Regulator

Adjustment Stem	Steel
Body	Aluminium
Bonnet	Aluminium
Knob	Plastic
Piston	Plastic
Poppet Assembly	Brass
Seals	Nitrile
Spring (Poppet & Control)	Steel

Filter/Regulator

Body, Bonnet & Bowl	Aluminium
Deflector	Plastic
Drains	Plastic
Seals	Nitrile
Element	Plastic
Sight glass	Polyamide
Piston	Plastic
Knob	Plastic
Spring (Poppet & Control)	Steel

Lubrication of airlines

Satisfactory operation of airline equipment and effective lubrication depends upon the proper selection of lubrication oil. Oils having a viscosity below ISO3448 Grade 10 to 22 will satisfy most high-speed pneumatic tools and other light duty requirements.

Heavy duty tools and pneumatic valves and cylinders will normally require oils in the viscosity ISO3448 Grade 32 to 68.

Only Paraffinic based oils can be used and the following recommendations are given as a general guide to types of oil that are suitable for use with Parker airline equipment.

Oil Company	High speed tools and systems		Air Cylinders and valves	
	ISO Grade	Grade	ISO Grade	Grade
Century Oils	Century P - 198	15	P.W.L.A	32
Alexander Duckham	Zurcon 2	15	Zurcon 4 32	
Gulf	Harmony 38AW	15	Harmony 43AW	32
Shell (UK) Oil	Tellus 22	22	Tellus 37	37
Burmah Castrol	Hyspin AWS15	15	Hyspin AWS32	32
Edgar Vaughan	KSO 5L	10	Hydrodrive HP100	32
Esso Petroleum	NUTO 1115	15	NUTO H32	32
B.P.	HLP 22	22	HLP 32	32
Mobile Oil Company	Velocite No.6	10	DTE Oil - Light	32
Mobile			VPI-A	32
Silkolene	Silkair GP22	22	Derwent 32	32
Silkolene	Dove 15	15		
Shell	Cassida Fluid HF*	32		
Klüberoil	4UH1*	32		

* For food industry applications : approved oil USDA-H1

Most Parker Pneumatic valves and cylinders are designed for use in non-lube operation. However airline lubrication will increase the service life.

Note! If oil lubrication is used, it must be maintained for the service life of the product.

Some specialised lubricants, particular synthetic reclaimed oils and low temperature additives, may contain compounds which are incompatible with certain materials, internal 'O' rings and seals. They may also attack plastic piping or the transparent bowls of the airline lubricator. Attention is drawn to BS6005 (Specification for moulded transparent polycarbonate bowls used in compressed air filters and lubricators).

Do not use oils with additives, compounds oils containing solvents, graphite, detergents or synthetic oils.

www.parker.com

Pneumatic Division Sales Offices

Austria - Wr.Neustadt

Tel: +43 2622 23501
Fax: +43 2622 66212

Belgium - Nivelles

Tel: +32 67 280 900
Fax: +32 67 280 999

**Czech & Slovak
Republics - Klecany**

Tel: +420 284 083 111
Fax: +420 2 4 083 112

Denmark - Ballerup

Tel: +45 43 560400
Fax: +45 43 733107

Finland - Vantaa

Tel: +358 9 4767 31
Fax: +358 9 4767 3200

France - Contamine

Tel : +33 4 50 25 80 25
Fax : +33 4 50 25 24 25

Germany - Kaarst

Tel: +49 2131 4016-0
Fax: +49 2131 4016-9199

Greece - Athens

Tel: +30 210 933 6450
Fax: +30 210 933 6451

Hungary - Budapest

Tel: +36 1 220 4155
Fax: +36 1 422 1525

Ireland - Dublin

Tel: +353 1 4666370
Fax: +353 1 4666376

Italy - Corsico, Milan

Tel: +39 02 4519 21
Fax: +39 02 4479 340

Netherlands - Oldenzaal

Tel: +31 541 585000
Fax: +31 541 585459

Norway - Langhus

Tel: +47 6491 1000
Fax: +47 6491 1090

Poland - Warsaw

Tel: +48 22 573 24 00
Fax: +48 22 573 24 03

**Portugal - Leça da
Palmeira**

Tel: +351 22 999 7360
Fax: +351 22 996 1527

Romania - Bucharest

Tel: +40 21 252 1382
Fax: +40 21 252 3381

Russia - Moscow

Tel: +7 095 580 91 45
Fax: +7 095 580 91 46

Slovenia - Novo mesto

Tel: +386 7337 6650
Fax: +386 7337 6651

Spain - Madrid

Tel: +34 91 675 7300
Fax: +34 91 675 7711

Sweden - Spånga

Tel: +46 8 5979 50 00
Fax: +46 8 5979 51 20

Switzerland - Bolligen

Tel.: +41 31 917 18 50
Fax: +41 31 917 18 59

Turkey - Istanbul

Tel: +90 212 482 91 06
Fax: +90 212 482 91 10

UK - Cannock

Tel: +44 1543 456000
Fax: +44 1543 456001

Ukraine - Kiev

Tel: + 380 44 494 2731
Fax: + 380 44 494 2730



Parker Hannifin Ltd.
Pneumatic Division,
Walkmill Lane, Bridgtown,
Cannock, Staffs. WS11 0LR
United Kingdom

We reserve the right to make
alterations without prior notification.

© Copyright 2007
Parker Hannifin Corporation
All rights reserved